

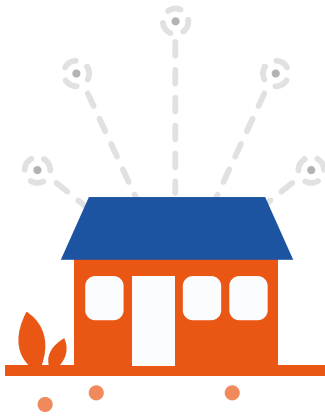


## We strive to:

1

### Get and Keep Kids in School

Global Partners mobilizes low performing primary schools and their communities and encourages all households to participate alongside school staff in the identification, implementation, and sustainability planning of projects that impact student attendance. Our model is working. Our partner schools saw a 54% increase in student attendance over schools who didn't partner with GPFD.



Over 1/5 of children between the ages of 6 and 11 and 1/3 of children between the ages of 12 and 14 in Africa are out of school.

One in four children in low income countries can't read.

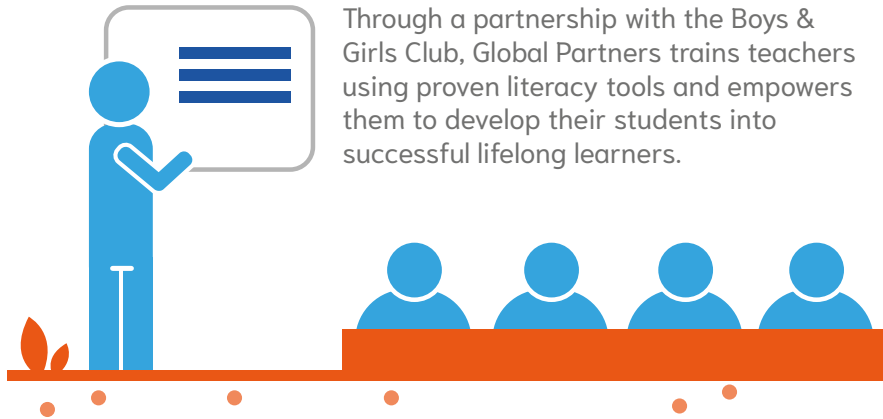
Only 20% of aid for education goes to low income countries.

Together,  
we can right  
these wrongs.

2

### Improve the Quality of Education

Through a partnership with the Boys & Girls Club, Global Partners trains teachers using proven literacy tools and empowers them to develop their students into successful lifelong learners.



### Commitment to Community-Led Development

Although Global Partners has focused largely on education in recent years, we have remained committed to impactful, sustainable, locally-led initiatives since the organization's founding nearly 40 years ago.

3

### Empower Communities to Achieve Their Future Goals

Global Partners equips communities with the knowledge, skills, and seed money they need to design and operate sustainable businesses to support their schools after we exit.

